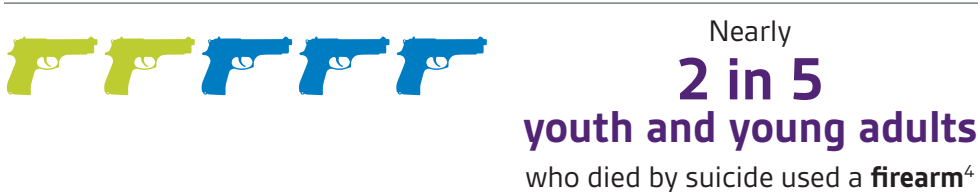
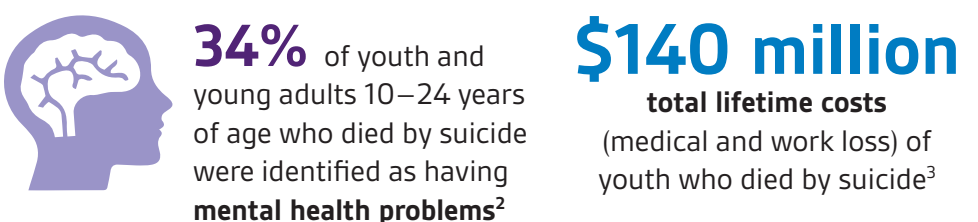
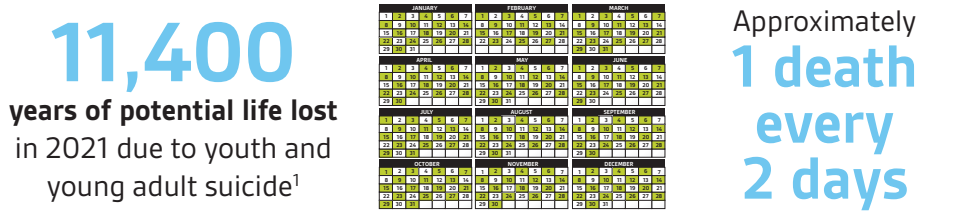
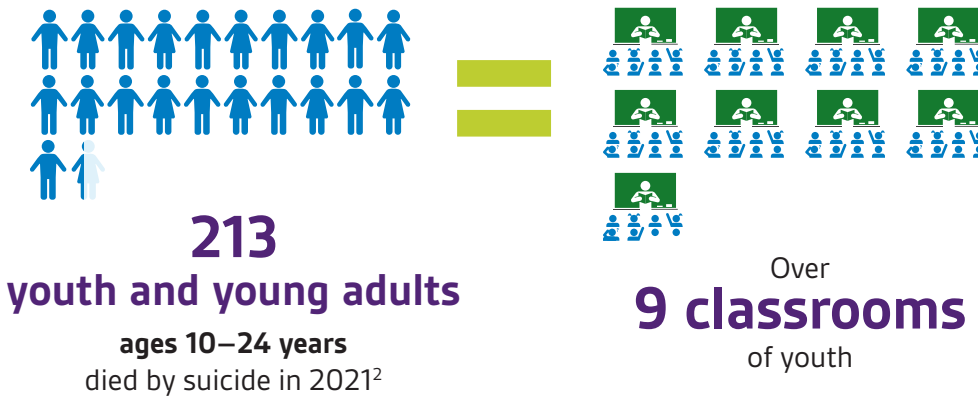
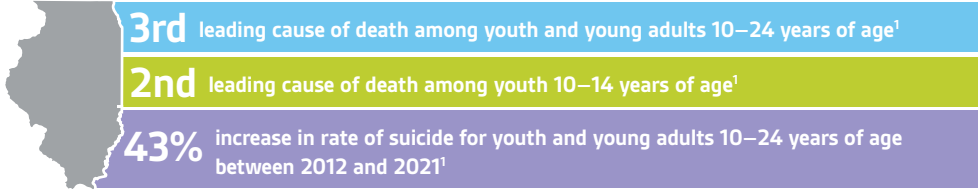


Illinois Suicides Among Youth Ages 10–24



- RISK FACTORS**⁴
- Mental health conditions
 - Stressful life events
 - Sexual orientation
 - Gender identity
 - Previous suicide attempt
 - Access to lethal means
 - Family history of suicide, abuse or neglect

AGES 10–14
20% had a school problem that likely contributed to their death.²

AGES 15–19
22% were in treatment for a mental health or substance use problem at the time of their death.²

AGES 20–24
27% had problems with an intimate partner that likely contributed to their death.²

SUMMARY OF YOUTH AND YOUNG ADULTS AGES 20–24 WHO DIED BY SUICIDE²

- 10%** disclosed plans to commit suicide within a month prior to the fatal injury.
- 16%** had a history of attempting suicide before the fatal accident.
- 19%** were perceived to be depressed at the time of the injury.

Call to Action



FUNDING

- Increase funding for the Illinois Suicide Prevention Call Centers so all Illinois calls can be answered in our state
- Require the State to negotiate equitable insurance reimbursement for behavioral health services
- Allocate funding to allow the State to expand the Illinois Violent Death Reporting System to all counties and produce an annual report on statewide findings
- Provide resources to the Department of Public Health to ensure compliance with the provisions of 20 ILCS 2310/2310-455 to implement activities associated with the Suicide Prevention, Education, and Treatment Act
- Support loan forgiveness and related programs to expand the behavioral healthcare workforce and address provider shortages in underserved areas
- Support reimbursement for telepsychiatry and school-based mental health services
- Designate funding toward initiatives that will train primary care providers on evidence-based suicide screening and assessment practices

TRAINING

- Ensure all professionals serving children are trained in evidence-based suicide prevention, intervention and postvention (intervention/support after a suicide occurs)
- Require suicide prevention as a core educational requirement for the licensing of medical and behavioral health systems and professionals
- Support the creation of a behavioral health provider pipeline
- Support and promote Crisis Intervention Team (CIT) training for law enforcement officers

COMPLIANCE

- Require the Illinois State Board of Education to monitor and enforce compliance with suicide prevention and anti-bullying laws directed at primary and higher education institutions and to annually report their findings to the State legislature
- Implement an anti-bullying policy required by 105 ILCS 5/27-23.7, regularly review its effectiveness and revise the policy as needed
- Require the Departments of Insurance and Health and Family Services to strictly enforce compliance with Illinois' parity law (215 ILCS 5/370c and 370c.1), including implementation of the annual treatment limitation reporting format for use by commercial and Medicaid health plans mandated by Public Act (PA) 100-1024

DATA

- Increase the efficiency of state-based processes for certifying, amending and reporting vital records related to suicide death

RESOURCES

Illinois Department of Public Health (IDPH)
Suicide Prevention
<http://www.dph.illinois.gov/topics-services/prevention-wellness/suicide-prevention>

Illinois Suicide Prevention Strategic Plan 2020
<https://dph.illinois.gov/content/dam/soi/en/web/idph/files/publications/illinoisstrategicplan2020reduced.pdf>

American Foundation for Suicide Prevention (AFSP)
Save Lives and Bring Hope to Those Affected by Suicide: <https://afsp.org/>

Crisis Text Line
Text HOME to 741741
Text from anywhere in the United States, anytime, about any type of crisis
<https://www.crisistextline.org/>

TrevorLifeline for LGBTQ youth
866.488.7386
Web Chat: <https://www.thetrevorproject.org/webchat>
Texting: Text START to 678-678
Trained counselors who understand the challenges LGBTQ young people face are available for support 24/7. They will listen without judgment and all conversations are confidential.
<https://www.thetrevorproject.org/get-help/>

National Suicide Prevention Lifeline
988 (English and Spanish)
Provides 24/7, free and confidential support for people in distress, prevention and crisis resources for you or loved ones, and best practices professionals in the United States.
<https://988lifeline.org/> (English)
<https://988lifeline.org/es> (Spanish)

DATA SOURCES AND CITATION

1. Centers for Disease Control and Prevention, National Center for Health Statistics. National Vital Statistics System, Mortality 2018-2021 on CDC WONDER Online Database, released in 2021. Data are from the Multiple Cause of Death Files, 2018-2021, as compiled from data provided by the 57 vital statistics jurisdictions through the Vital Statistics Cooperative Program. Accessed at <http://wonder.cdc.gov/ucd-icd10-expanded.html> on Jun 7, 2023 3:45:40 PM
2. Illinois Violent Death Reporting System. Maryann Mason, PhD (Director); Northwestern University; maryann-mason@northwestern.edu.
3. Illinois Violent Death Reporting System. (April 2018). Data Brief: Suicide Rate Rises Among Illinois Youth Ages 10 to 17. Retrieved July 22, 2020 from <https://www.luriechildrens.org/globalassets/documents/luriechildrens.org/research/research-areas/research-programs/smith-child-health-research-program/ivdrs-suicides-april-2018.pdf>.
4. Hua LL, Lee J, Rahmandar MH, et al; American Academy of Pediatrics, Committee on Adolescence. Suicide and Suicide Risk in Adolescents. *Pediatrics*. 2024;153(1):e2023064800